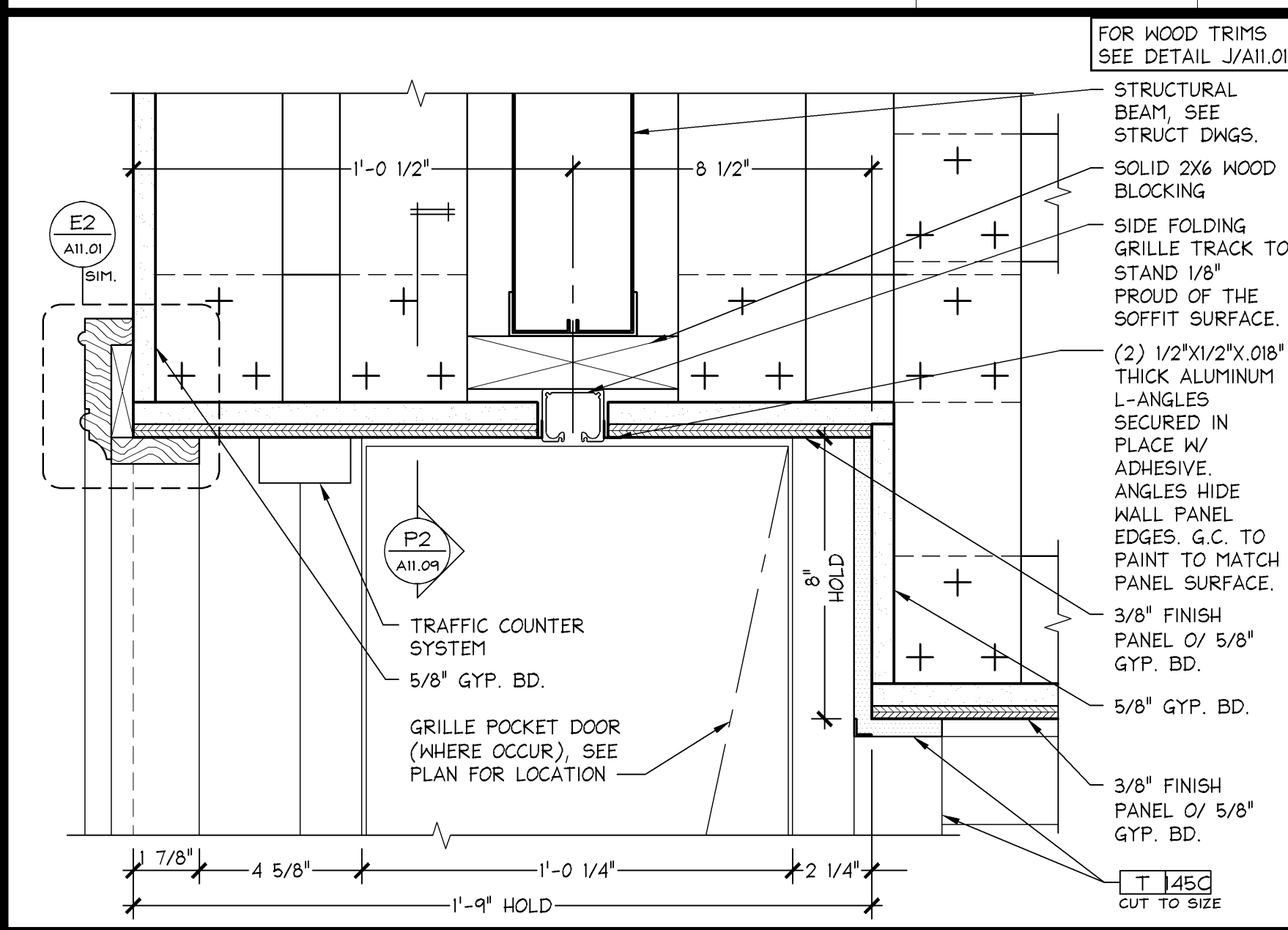
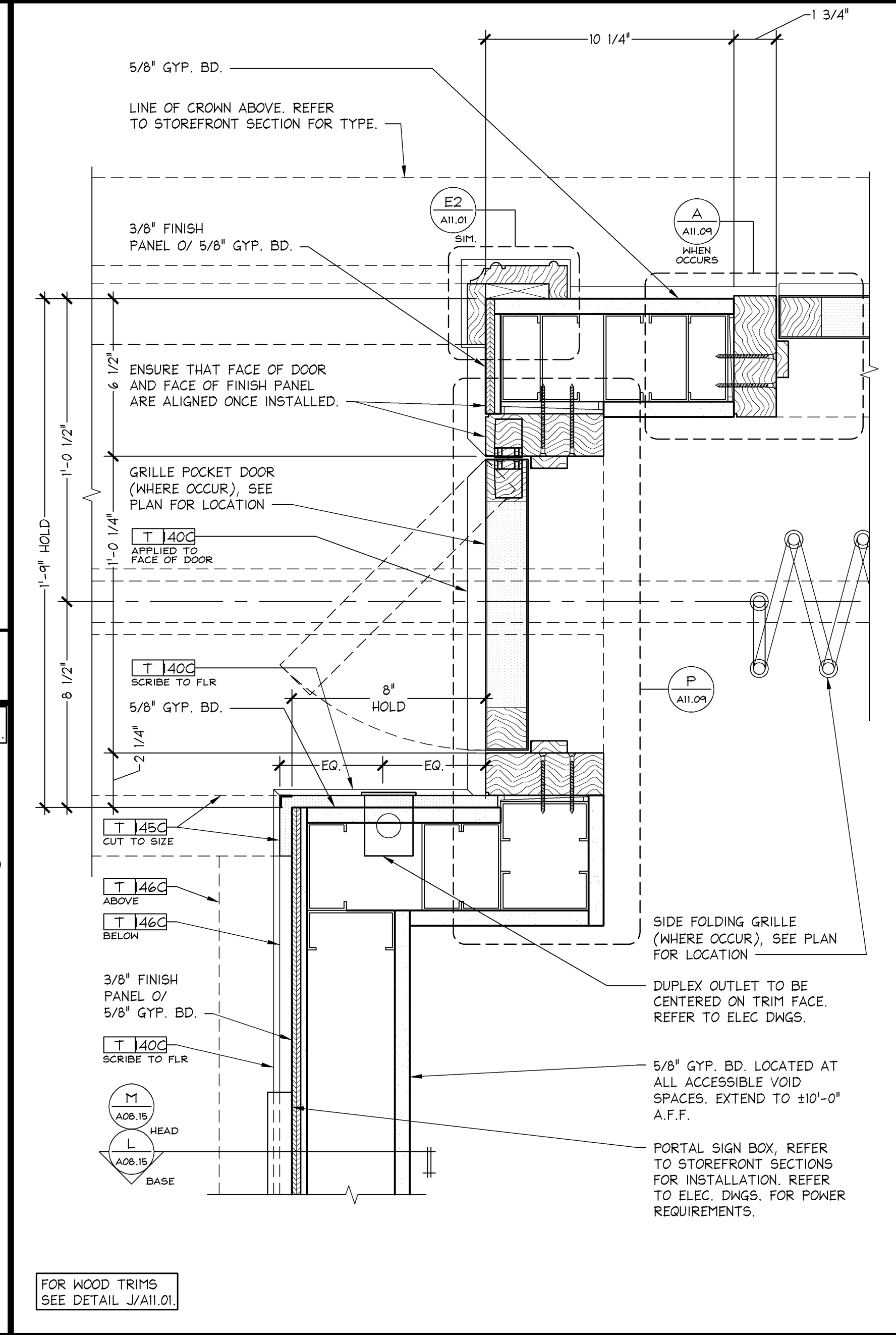


NOT USED 3" = 1'-0" S



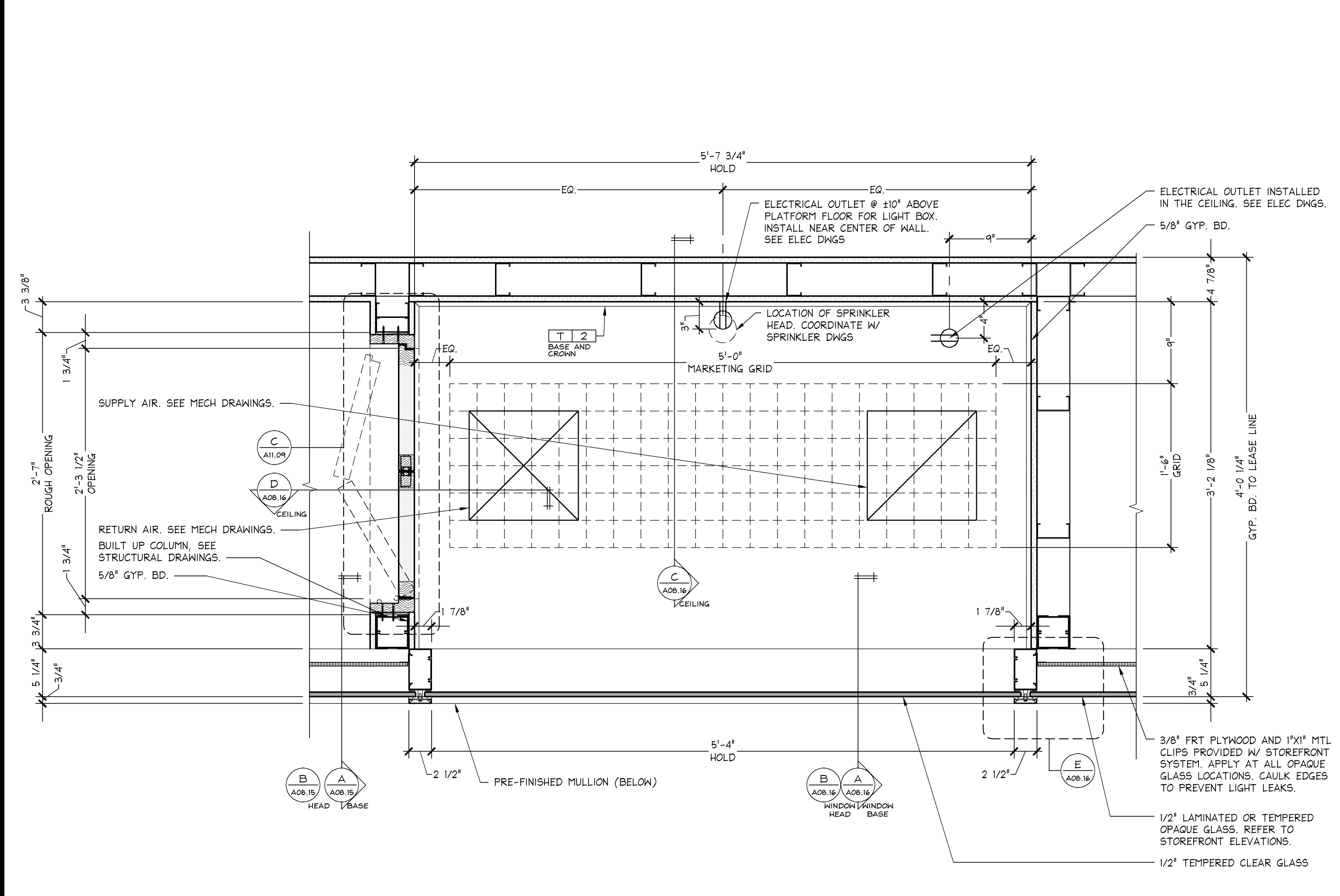
VERTICAL SECTION AT SIDE FOLD GRILLE HEAD 3" = 1'-0" OSD-A0815-J03-DETL R 02.21.14

NOTES:  
1. SEE STRUCTURAL DRAWINGS FOR FRAMING SIZE, GAUGE, AND ASSEMBLY OF ALL STOREFRONT FRAMING.  
2. SEE DETAIL J/A11.01 FOR ALL VSS WOOD TRIM PROFILES.  
3. SEE DETAIL J/A10.01 FOR ALL PINK WOOD TRIM PROFILES.  
4. SEE DETAIL A/A00.02 FOR DOOR SCHEDULE.  
5. ALL DIMENSIONS ARE TO FACE OF SHEATHING OR FINISH U.O.N.

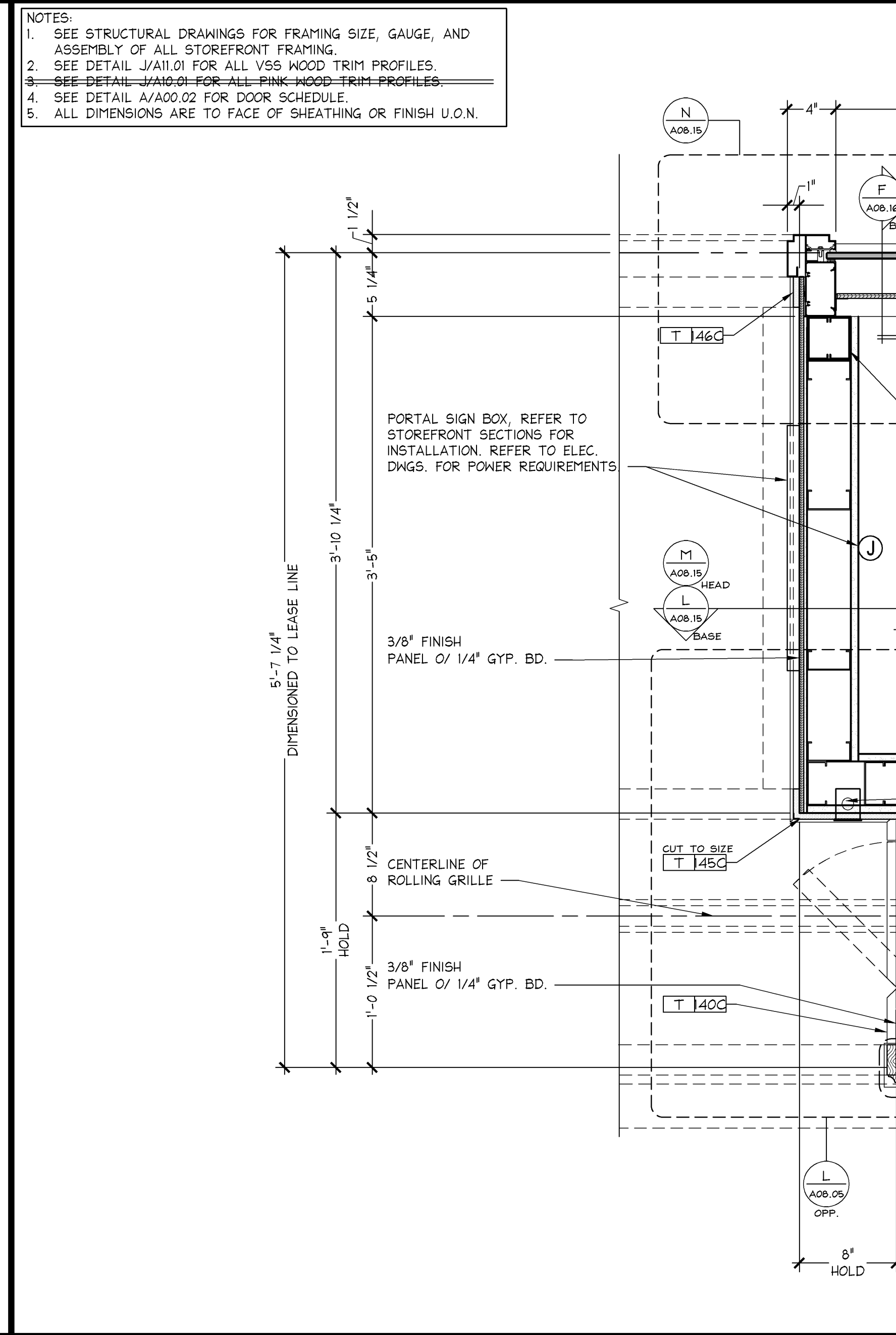


PLAN SECTION AT SIDE FOLD GRILLE POCKET DOOR 3" = 1'-0" OSD-A0815-P02-DETL L 02.22.14

NOTES:  
1. SEE STRUCTURAL DRAWINGS FOR FRAMING SIZE, GAUGE, AND ASSEMBLY OF ALL STOREFRONT FRAMING.  
2. SEE DETAIL J/A11.01 FOR ALL VSS WOOD TRIM PROFILES.  
3. SEE DETAIL J/A10.01 FOR ALL PINK WOOD TRIM PROFILES.  
4. SEE DETAIL A/A00.02 FOR DOOR SCHEDULE.  
5. ALL DIMENSIONS ARE TO FACE OF SHEATHING OR FINISH U.O.N.

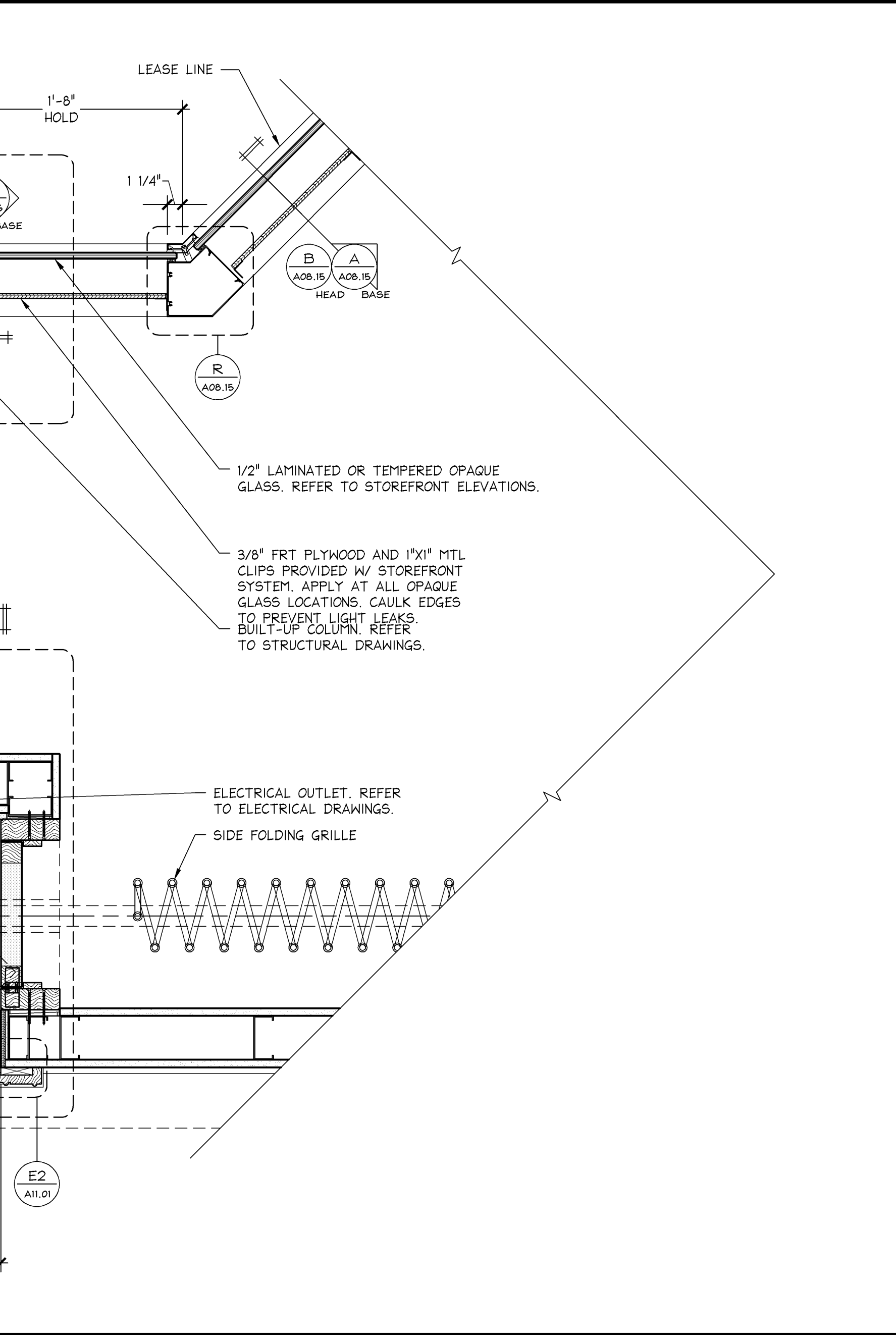


PLAN SECTION AT DISPLAY WINDOW - 64" 1 1/2" = 1'-0" J



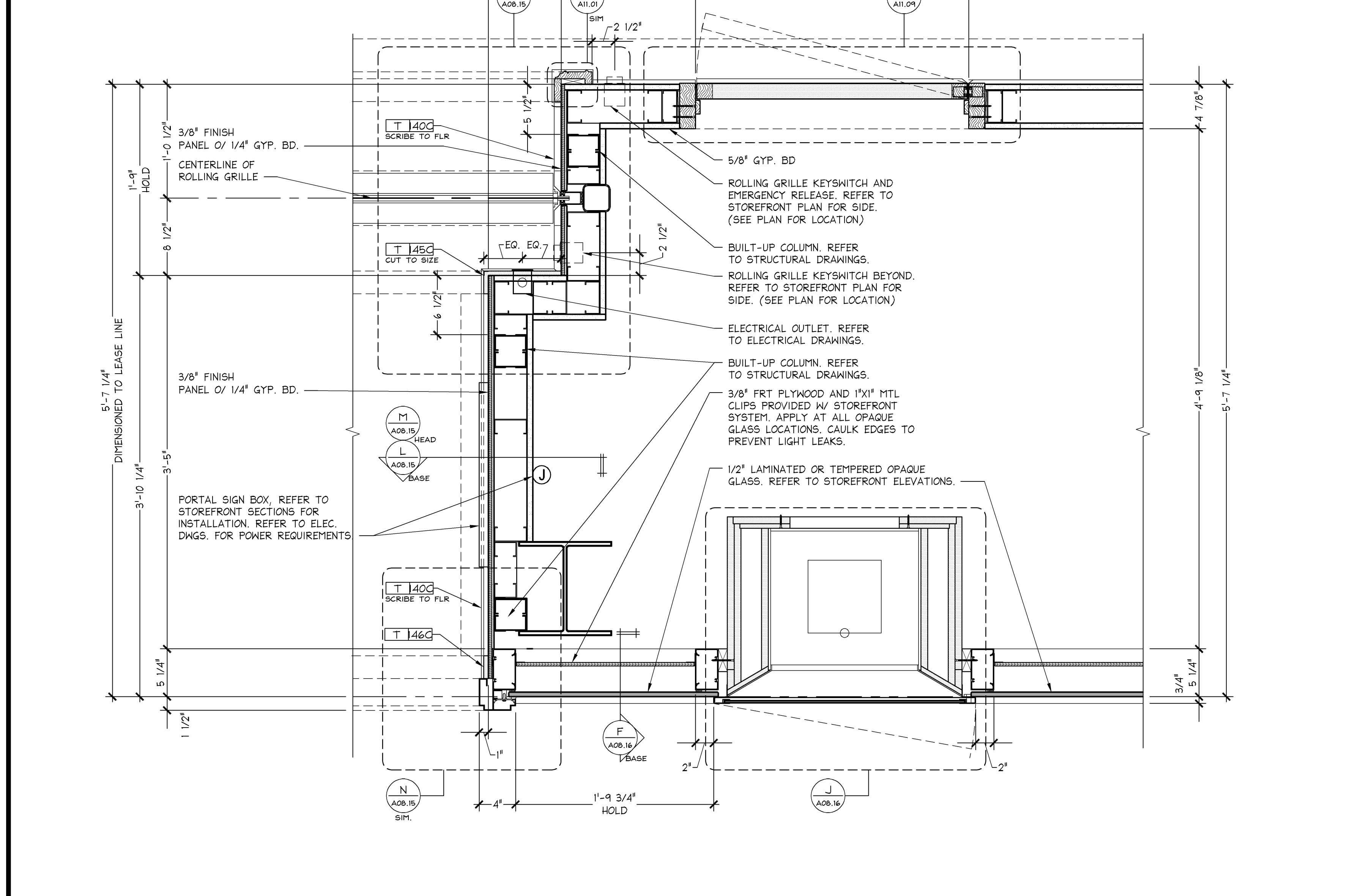
PLAN SECTION AT PORTAL W/ OVERHEAD COILING GRILLE 1 1/2" = 1'-0" A

NOTES:  
1. SEE STRUCTURAL DRAWINGS FOR FRAMING SIZE, GAUGE, AND ASSEMBLY OF ALL STOREFRONT FRAMING.  
2. SEE DETAIL J/A11.01 FOR ALL VSS WOOD TRIM PROFILES.  
3. SEE DETAIL J/A10.01 FOR ALL PINK WOOD TRIM PROFILES.  
4. SEE DETAIL A/A00.02 FOR DOOR SCHEDULE.  
5. ALL DIMENSIONS ARE TO FACE OF SHEATHING OR FINISH U.O.N.



PLAN SECTION AT PORTAL W/ SIDE FOLDING GRILLE 1 1/2" = 1'-0" C

NOTES:  
1. SEE STRUCTURAL DRAWINGS FOR FRAMING SIZE, GAUGE, AND ASSEMBLY OF ALL STOREFRONT FRAMING.  
2. SEE DETAIL J/A11.01 FOR ALL VSS WOOD TRIM PROFILES.  
3. SEE DETAIL J/A10.01 FOR ALL PINK WOOD TRIM PROFILES.  
4. SEE DETAIL A/A00.02 FOR DOOR SCHEDULE.  
5. ALL DIMENSIONS ARE TO FACE OF SHEATHING OR FINISH U.O.N.



PLAN SECTION AT PORTAL W/ OVERHEAD COILING GRILLE 1 1/2" = 1'-0" A

PROJECT INFORMATION: VICTORIA'S SECRET PARK PLAZA MALL 6000 W. MARKHAM STREET SPACE# 2030 LITTLE ROCK, AR 72205  
REVISIONS: DATE ISSUED: 05/23/2014  
DESIGNED BY: LCM  
DRAWN BY: LMR  
CHECKED BY: JRM  
STOREFRONT DETAILS  
DRAWING NUMBER: A08.05

SHREMSHOCK Architects, Inc.  
8130 S. Sundry Rd. Westerville, OH 43081  
P: 614.545.4500 | F: 614.545.4505 | shremshock.com  
Garalt S. Shremshock, Architect  
Timothy J. Shremshock, Architect

Limitedbrands  
LIMITED STORE PLANNING, INC.  
d/b/a STORE DESIGN & CONSTRUCTION  
Three Limited Parkway • Columbus, Ohio 43230  
Telephone: 614.415.7000 • Fax: 614.415.7349

010500295  
VICTORIA'S SECRET  
PARK PLAZA MALL  
6000 W. MARKHAM STREET  
SPACE# 2030  
LITTLE ROCK, AR 72205  
SCOPE: STORE TYPE: LSTRAC PROJECT #:  
FULL RENODEL PACKAGE: N/A  
REVISIONS: 00059784  
FALL 2014  
PKG 2  
(141)F0  
140153